

WARNING: Any use of sealant not specified by OE will cancel the warranty. This also applies to residues resulting from coolant contamination.



We need you to know that...

SKF coolant pumps have been manufactured using high-quality materials and precision technology. All SKF coolant pumps undergo a thorough approval process and leak test to ensure full compliance with OE standards. However, external factors such as the usage of sealant paste or residues suspended in the coolant, **Will trigger a non valid warranty claim.**

Our quality system will **immediately invalidate any claim** on SKF coolant pumps if **the usage of sealant is present when not recommended by the OE repair procedure OR when the pump presents traces of coolant contamination.**

Decision to apply Sealant or not:

Does the pump includes a paper, metal or rubber gasket? if Yes, Please don't use sealant. The gasket is designed to seal on its own. SKF will ensure to follow OE supplying the required gasket with each kit.



Coolant pump with Non-gasket into the box: In these cases OE has not prescribed a Seal, you can apply a **THIN LAYER** of sealant **following OE instructions for the pump.**

Danger of excess: Applying sealant when is not prescribed by OE OR in excess, will cause the sealant residues to be suck into the mechanical seal of the coolant pump causing coolant leaks and ultimately lead to severe engine damages.

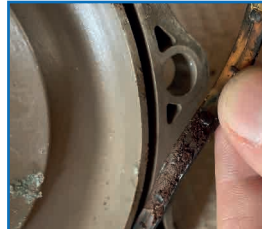


How does excess or incorrect use of paste affect our coolant pumps?

Results of sealant paste displacing the mechanical seal of the pump will lead to coolant loss.



The particles can break down into smaller particles generating contamination and upon entering the seal; disrupting the pressure of the internal spring and leading to coolant loss.



Coolant pollution on dismantled pump; rust and calcification, results of contaminated cooling circuit.



How to apply sealant correctly when OE prescribed:

- 1. Thorough cleaning:**
Remove any remnants of the old gasket with a spatula or fine sandpaper and degrease with gasoline or brakecleaner.
- 2. Thin bead:**
Apply a thin, even bead almost transparent layer to the pump housing.
- 3. Curing time:**
Allow the sealant to set for a few minutes before installing the part, and wait the time specified by the manufacturer before adding antifreeze.

How coolant pollution will also void your warranty?

Not flushing the entire system before refilling new coolant; We will be able to identify if this step has not been carried up properly through the residues of sealant or pollution in the seal gasket; voiding the warranty.



When using sealant paste while not prescribed by OE OR if the claimed pump has traces of coolant contamination, you will cancel immediately the warranty