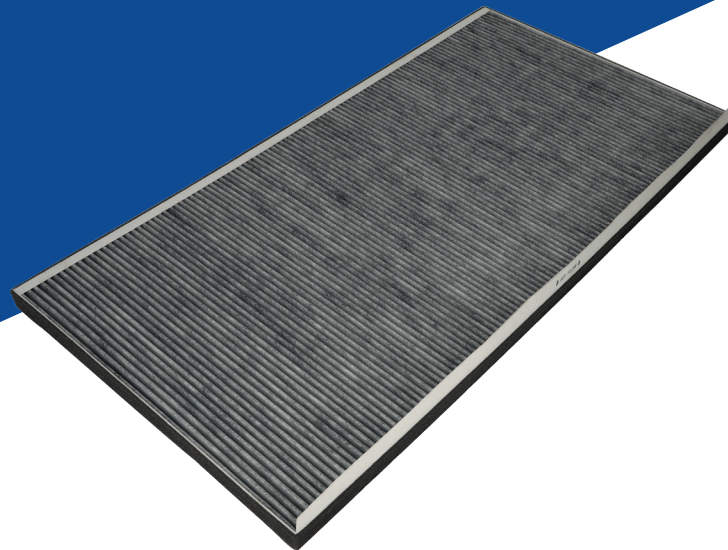


NEW PRODUCT HIGHLIGHT | OCT2023



Blue Print ADBP250071, ADBP250073

To fit:
Tesla Model S, Model X



EN

Cabin filter

Function

The Tesla model S and X are equipped with "Bioweapon Defence Mode". This feature, which has been available as an option on these models since 2016, is now standard on both the "S" and "X" since July 2018.

Part of this system is a very large high-efficiency particulate air (HEPA) cabin filter that contains separate acid and alkaline gas neutralization layers to filter out a wide range of contaminants. This filter is located within the front of these Tesla models listed (commonly known as the "Frunk" - Fig.1). When activated, the Bioweapon Defence Mode recirculates the air through the high-quality HEPA filter, purifying it within the cabin whilst avoiding the intake of contaminated outside air. All model S and X vehicles are equipped as standard with a cabin filter, which is located within the heating system behind the glove box. However, when Bioweapon Defence Mode is activated, it adds the additional HEPA filter as another layer of filtration.

In addition to the multiple layers of filtering material, both filters for the interior air (including the HEPA filter) also contain activated carbon to remove a wide range of odours and gases. Additionally, when Bioweapon Defence Mode is engaged, the interior fans are operated at maximum speed to create a positive pressure inside the cabin to minimize the amount of outside air that can enter. This process is similar to a positive pressure room in a biohazard laboratory or hospital, preventing the backflow of bacteria and viruses into other parts of the building.

For more technical information please visit: partsfinder.bilsteingroup.com

NEW PRODUCT HIGHLIGHT | OCT2023



Blue Print ADBP250071, ADBP250073

To fit:
Tesla Model S, Model X

EN



Figure 1

Cause of failure

All filters require replacing at set recommended intervals, due to contamination and debris. This is to maintain the efficiency of the system components and - in the case of cabin filters - to protect the driver and passengers for their passive driving safety. The recommended service interval for the HEPA filter is every 36 months regardless of mileage.

Blue Print offers a cost effective, sustainable replacement solution for this HEPA filter. The Blue Print filter replaces the filter media section only. This is unlike the OE part where both the reusable frame and the filter are replaced as one unit.

Both Blue Print HEPA filters ADBP250071 and ADBP250073 come complete with installation instructions included in the box. These instructions can also be found online at: partsfinder.bilsteingroup.com