



## SERVICE INFO



LUK 0545

## Understanding Vauxhall/Opel engine numbers

Manufacturer: Vauxhall/Opel

Model: All

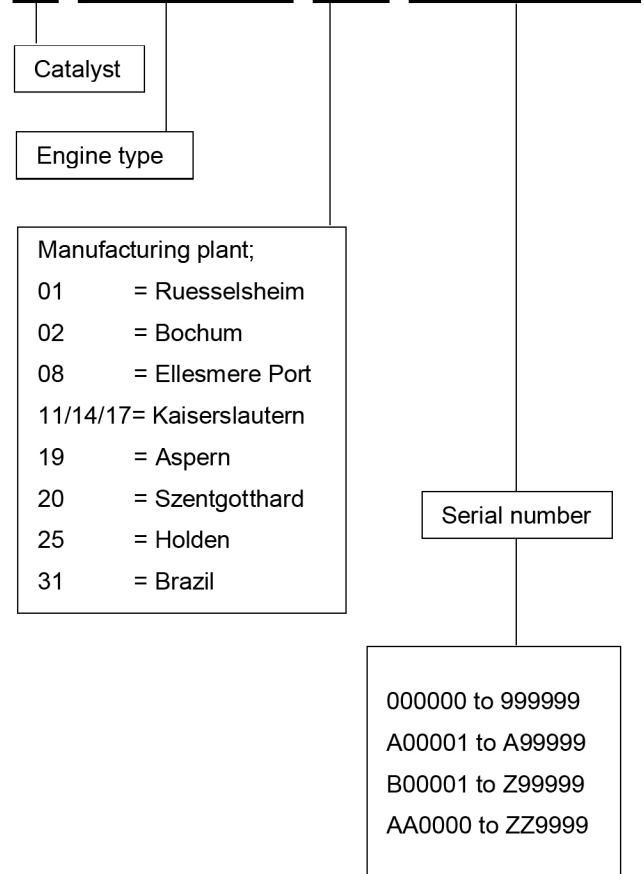
This bulletin is to clarify the information required to correctly identify the parts fitted to many of the Vauxhall/Opel range. Calls to the Technical Hotline demonstrate some confusion on the engine number sequence on these vehicles as two methods can be used.

**Seven digit type;** Many of the Vauxhall/Opel catalogue listings are defined by a sequential, seven digit engine number.

**Eight digit type;** Some Vauxhall/Opel engines are manufactured in more than one plant. This is why some components have multiple change points. On the vast majority of the Vauxhall/Opel range, the catalogue listing will show the plant or plants used as part of the engine number (as shown). In these cases the six digit serial number after the plant code is the critical part of the sequence. The serial number is formatted in an alpha numeric sequence as shown on the right.

For example you may find the change point of; 20AX2408  
If the engine number on your vehicle is 20AC5021 then you would require the parts listed up to the change point. If your engine number is 20BC0491 then the parts after the change point would be required.

X 20XEV 02 000001



- For accurate model information please see LuK catalogue
- Die genaue Fahrzeugzuordnung entnehmen Sie bitte dem LuK-Katalog
- Pour plus d'information sur les applications veuillez vous référer au catalogue LuK
- Para obtener información sobre el modelo, rogamos consulte el catálogo de LuK
- Per informazioni sul modello consultare il catalogo LuK

Phone :+44(0) 1432 264 264\*  
Fax : +44(0) 1432 375 760  
E-mail : [hfd-pm@schaeffler.com](mailto:hfd-pm@schaeffler.com)  
[www.schaeffler-aftermarket.co.uk](http://www.schaeffler-aftermarket.co.uk)

\* calls from the UK : 08457 001100